

# Gershwin By George!

Piano

Strike up the Band

Measures 1-7 of the piano score. The key signature has one flat (B-flat). The time signature is 4/4. The music features a strong bass line with a *sf* (sforzando) dynamic in measures 2 and 4. The right hand has a melodic line with a *sf* dynamic in measure 2. Measure 7 ends with a repeat sign.

Measures 8-12 of the piano score. Measure 8 starts with a repeat sign. Measures 9-12 show a more complex texture with triplets and sixteenth notes in the right hand, and a steady bass line. A *v* (accrescendo) dynamic is marked in measure 12.

Measures 13-20 of the piano score. Measures 13-14 feature a triplet of eighth notes in both hands. Measures 15-20 continue with a melodic line in the right hand and a bass line in the left hand. A *v* dynamic is marked in measure 19.

Measures 21-26 of the piano score. Measures 21-26 show a melodic line in the right hand and a bass line in the left hand. A *v* dynamic is marked in measure 25.

Measures 27-32 of the piano score. Measures 27-32 show a melodic line in the right hand and a bass line in the left hand. A *v* dynamic is marked in measure 32.

Measures 33-38 of the piano score. Measures 33-38 show a melodic line in the right hand and a bass line in the left hand. A *f* (forte) dynamic is marked in measure 33. Measure 38 ends with a repeat sign.

39

Measures 39-44 of a piano piece. The key signature has two flats (B-flat and E-flat). The music features a mix of chords and single notes, with some measures containing triplets. The right hand has a melodic line with some grace notes, while the left hand provides harmonic support with chords and single notes.

45

Measures 45-51 of a piano piece. The key signature has two flats. Measure 45 starts with a forte (*ff*) dynamic. The music continues with a mix of chords and single notes, with some measures containing triplets. The right hand has a melodic line with some grace notes, while the left hand provides harmonic support with chords and single notes.

I Got Rhythm

52

Measures 52-57 of a piano piece. The key signature has two flats. The music features a mix of chords and single notes, with some measures containing triplets. The right hand has a melodic line with some grace notes, while the left hand provides harmonic support with chords and single notes.

58

Measures 58-62 of a piano piece. The key signature has two flats. The music features a mix of chords and single notes, with some measures containing triplets. The right hand has a melodic line with some grace notes, while the left hand provides harmonic support with chords and single notes.

63

Measures 63-66 of a piano piece. The key signature has two flats. The music features a mix of chords and single notes, with some measures containing triplets. The right hand has a melodic line with some grace notes, while the left hand provides harmonic support with chords and single notes.

67

Measures 67-70 of a piano piece. The key signature has two flats. The music features a mix of chords and single notes, with some measures containing triplets. The right hand has a melodic line with some grace notes, while the left hand provides harmonic support with chords and single notes.

72



78

## Embracable You



85



## An American in Paris

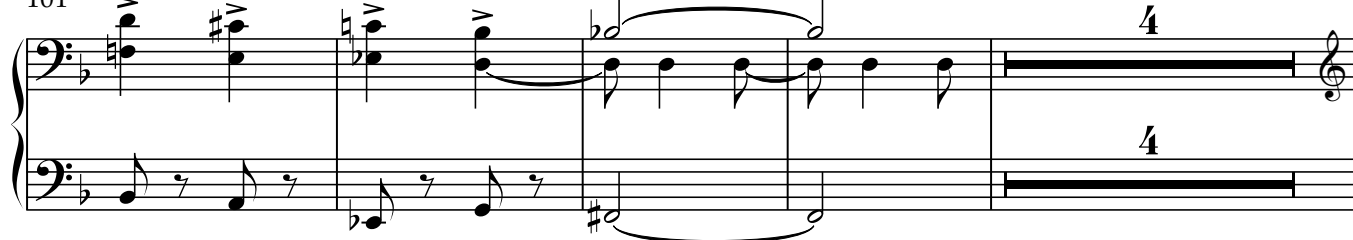
92



96



101



109

*ff* *mp*

118

127

*mp*

136

142

*fp* *sfp*

148

*mf*

154

3 3

159

3 *f*

163

*p*

## Rhapsody in Blue

169

*f*

175

*marcato molto*  
*mf*

181

*ff*

185

*ff*

191

*ff*

196

201

Grandioso

*ff*

205

*sfp*

*sffz*