

Gershwin By George!

Featuring *Strike Up the Band!*, *I Got Rhythm*, *Embraceable You*,
An American in Paris, *Prelude II*, *Summertime*, and *Rhapsody in Blue*

TUBA

Arranged by Jerry Brubaker

"Strike Up The Band! (from *Strike up the Band*)"
Music and lyrics by George Gershwin and Ira Gershwin
Bright March

The musical score for the Tuba part of "Strike Up The Band!" is written in bass clef with a key signature of one flat (Bb) and a 4/4 time signature. The score consists of eight staves of music. The first staff begins with a measure number of 1 and includes dynamic markings *sfzp* and *f*. The second staff includes markings for *allarg.*, *molto rit.*, and *a tempo*, along with a tempo indication (♩ = ♩). The third staff starts at measure 13 and includes a *mf* marking. The fourth staff starts at measure 20. The fifth staff starts at measure 26. The sixth staff starts at measure 30 and includes a *f* marking. The seventh staff starts at measure 35. The eighth staff starts at measure 42 and includes a *ff* marking. The score includes various musical notations such as notes, rests, slurs, and dynamic markings.

43809

This Arrangement © 2014 WB MUSIC CORP and IRA GERSHWIN MUSIC, DU BOSE AND
DOROTHY HEYWARD MEMORIAL FUND and GEORGE GERSHWIN MUSIC.
All Rights Reserved including Public Performance


Purchase a full-length
performance recording!
alfred.com/downloads

1 copy sold to Chancellors School by J. W Pepper & Son Inc. on Apr 27, 2023



TUBA - 2



"I Got Rhythm"
Music and lyrics by George Gershwin and Ira Gershwin

54

Energetically



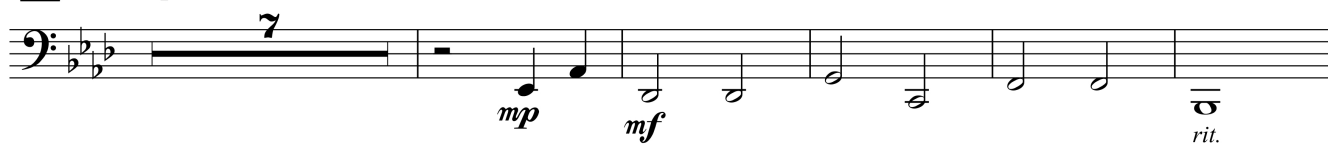
70



"Embraceable You (from Girl Crazy)"
Music and lyrics by George Gershwin and Ira Gershwin

81

Espressivo



"An American In Paris"
By George Gershwin

95

Grazioso



105

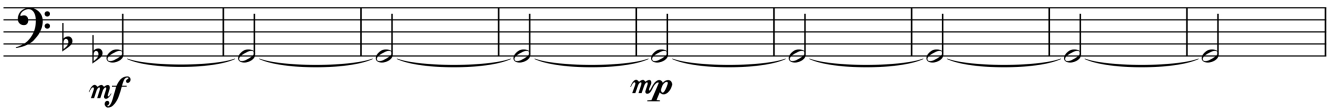


43809



TUBA - 3

113



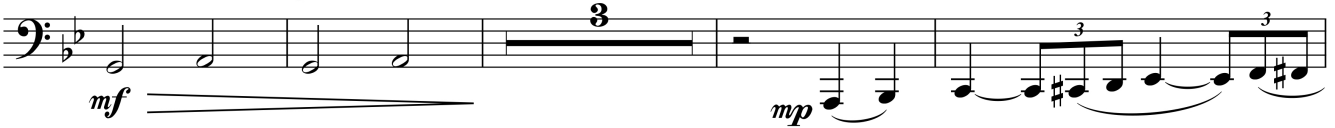
122



133

"Prelude II (Blue Lullaby) (Andante con moto e poco rubato)"
By George Gershwin
Adagio

148



"Summertime (from Porgy and Bess)"
Music and lyrics by George Gershwin, DuBose and Dorothy Heyward and Ira Gershwin
Moderate Swing



"Rhapsody In Blue"
By George Gershwin

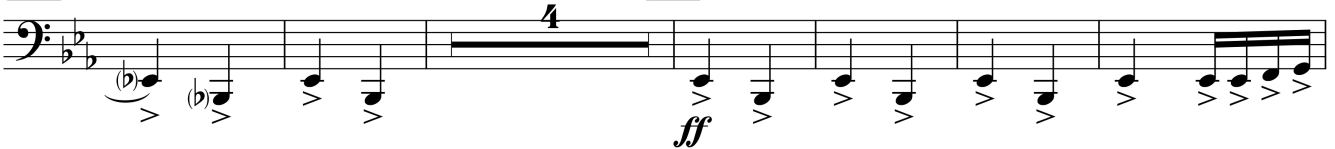
169



Agitato

cresc. ed accel. poco a poco molto marcato poco rit.

185



Grandioso

191



poco a poco rit.



ff molto allarg. (not too slow)



fp molto rit. **ffz**

43809

