

Themes from “Scheherazade”

FLUTE

Nikolai Rimsky-Korsakov (1844-1908)

Arranged by Richard Meyer (ASCAP)

Largo e maestoso **G.P.** **G.P.** **8** **div.** **8**

1-4 5 6 7 9 10 11 12

13 **Lento, alla recitativa** **12** **25** **Andantino**

13-24 26 27 28

mf dolce

29 30 31 32 33 34 35

36 **mf**

37 38 39 40 41

44 **fp** **rit.**

42 43 45 46 47 48

49 **Allegretto** **53** **8** **61** **7** **69** **p**

49-52 53-60 61-67 68

To Coda **77** **p**

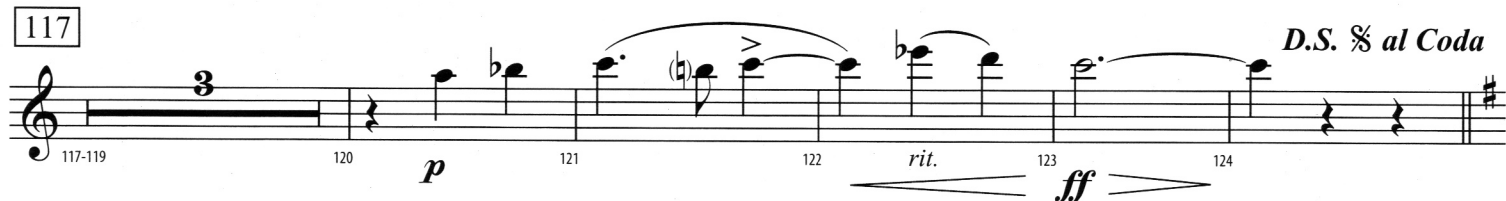
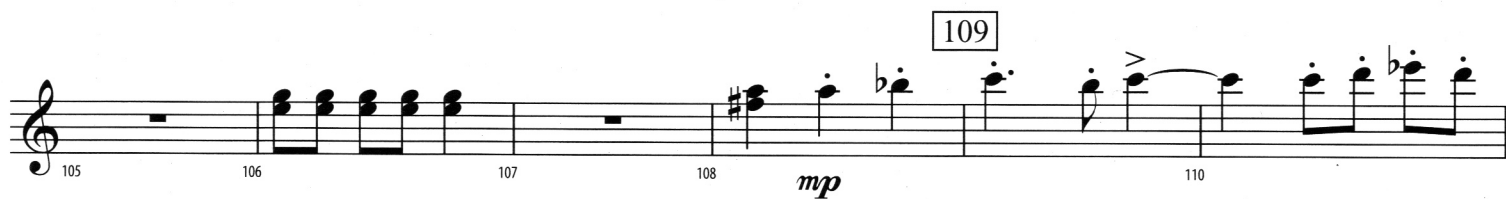
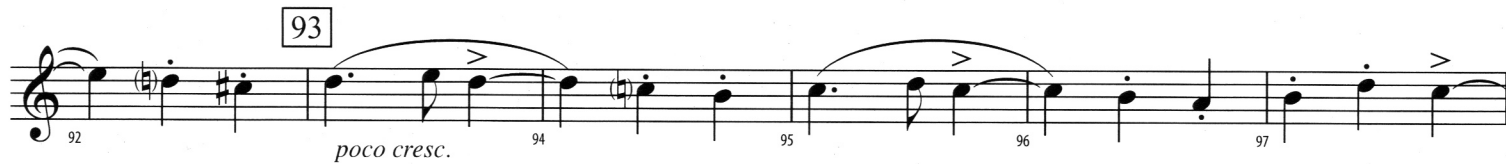
70 71 72 73-75 76

78 **79** **80** **81** **82** **83** **84** **mf**

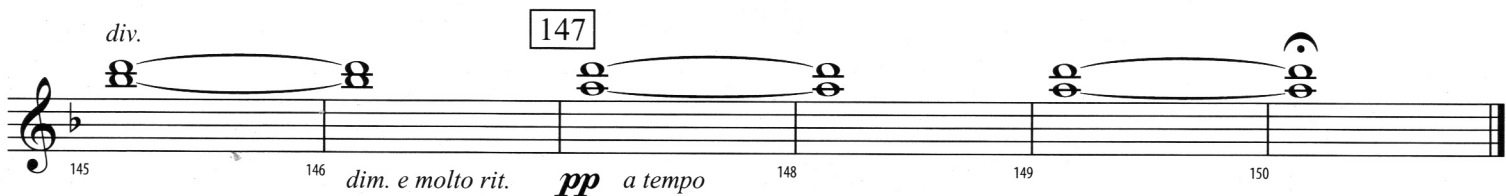
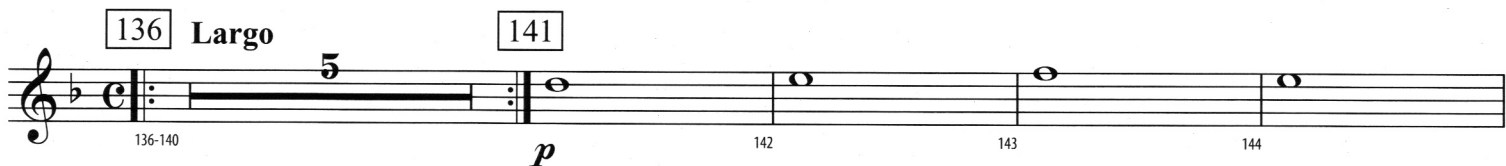
mf accel.

FLUTE - 2

85 Poco più mosso e grazioso



Coda



Themes from "Scheherazade"

OBOE

Nikolai Rimsky-Korsakov (1844-1908)

Arranged by Richard Meyer (ASCAP)

Largo e maestoso **G.P.** **G.P.** **8**

1-4 5 6 7 *p* 9 10 11 12

13 **Lento, alla recitative** **12** **25** **Andantino**

13-24 *mf dolce* 26 27 28

29 30 31 32 33 34 35

36

f 37 38 39 40 41

44

42 43 *fp* 45 46 *rit.* 47 48

49 **Allegretto** **53** **61** **69**

49-52 53-60 61-67 68 *p*

To Coda **77**

70 71 72 73-75 76 *p*

78 79 80 *mf* 81 *accel.* 82 83 84 *mf*

OBOE - 2

85 Poco più mosso e grazioso



93



101



109



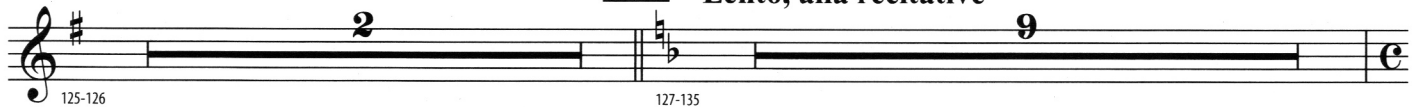
117



Coda

127

Lento, alla recitative



136

Largo

141



147



Themes from "Scheherazade"

1st B♭ CLARINET

Nikolai Rimsky-Korsakov (1844-1908)
Arranged by Richard Meyer (ASCAP)

Largo e maestoso

1 *ff* 2 3 4 5 6 *mf* 7

8 13 **Lento, alla recitativa** 12 13-24

25 **Andantino**

mf dolce 26 27 28 29 30

31 32 33 34 35 36 *mf* 37

38 39 40 41 42 43

44 49 **Allegretto** 3 49-51 52 *p*

53 **To Coda** 54 55 56 57 58

61 59 60 62 63 64 65

69 66 67 68 *pp* 70 71 72 73 74

1st B \flat CLARINET - 2

77

75 76 78 79 80 81 82 83 84

p *mf* *accel.* *mf*

85 Poco più mosso e grazioso

86 87 88 89 90

93

91 92 94 95 96 97 98

poco cresc.

101

99 100 102 103 104 105

f *sim.*

109

106 107 108 110 111

mp

117

112 113 114 115 116 118

p

D.S. % al Coda

119 120 121 122 123 124

ff *p* *rit.* *ff* *p*

Θ Coda

127 Lento, alla recitativa

125 126 127-135 9

136 Largo

137 138 139 140

pp

141

142 143 144 145 146 148 149 150

p *dim. e molto rit.* *mp* *a tempo*

Themes from "Scheherazade"

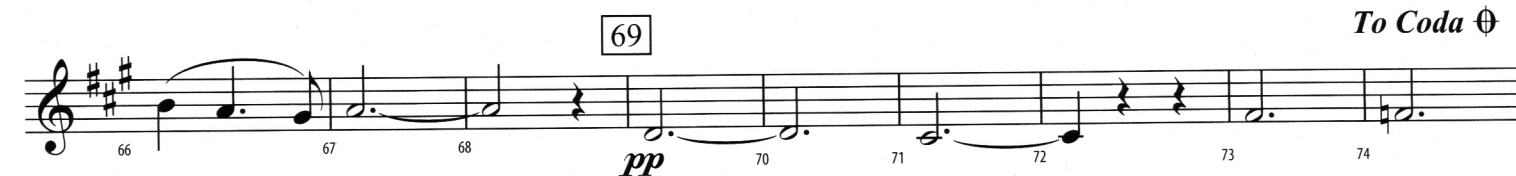
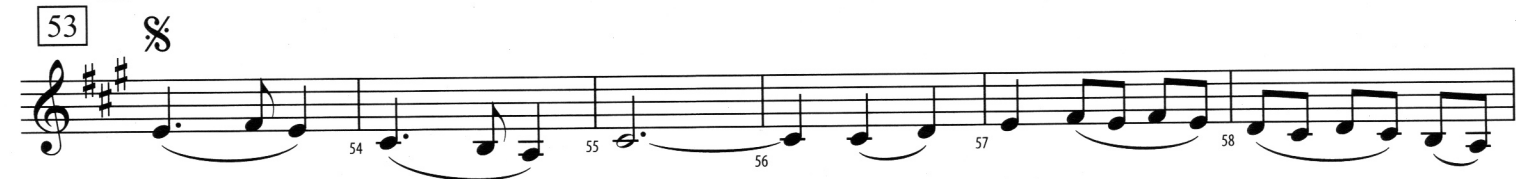
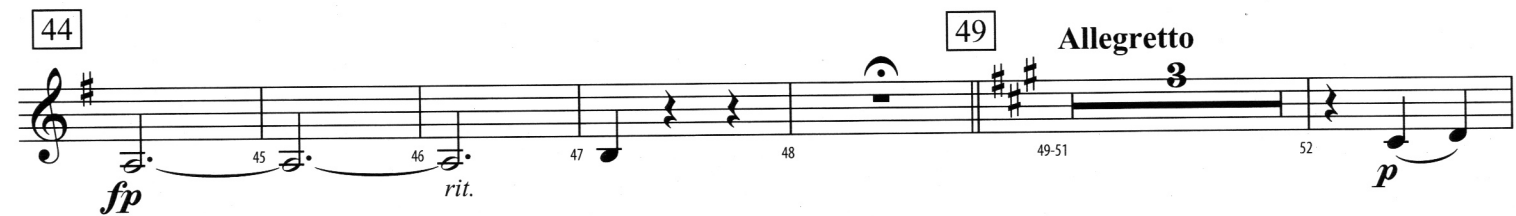
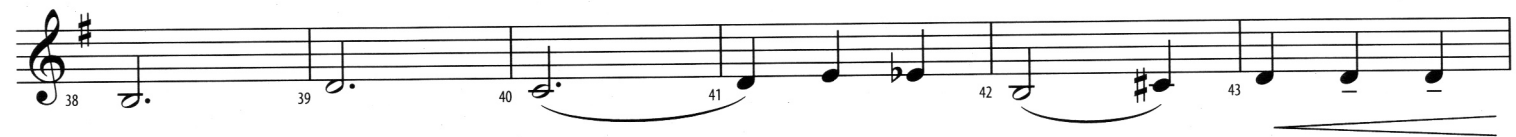
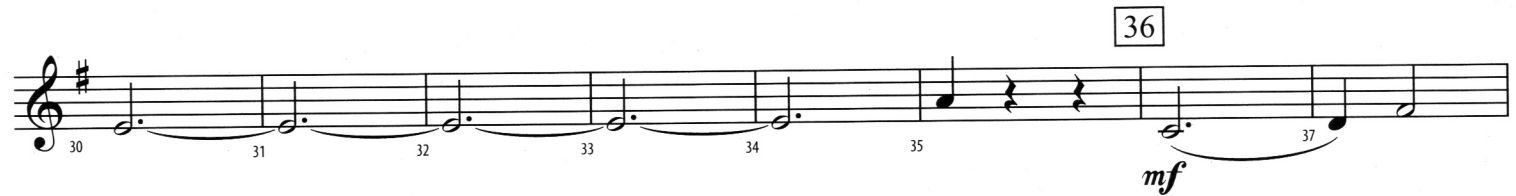
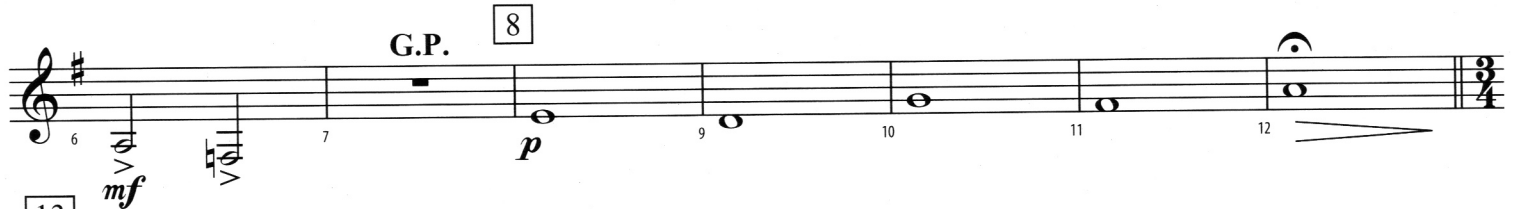
2nd B♭ CLARINET

Nikolai Rimsky-Korsakov (1844-1908)

Arranged by Richard Meyer (ASCAP)

Largo e maestoso

G.P.



To Coda ☉

2nd B \flat CLARINET - 2

77

75 76 78 79 80 81 82 83 84

p *mf* *accel.*

85

Poco più mosso e grazioso

86 87 88 89 90

p *sim.*

93

91 92 94 95 96 97 98

poco cresc.

101

99 100 102 103 104 105

f

109

106 107 108 110 111

mp

117

112 113 114 115 116 117 118

p

D.S. $\%$ al Coda

119 120 121 122 123 124

ff *p* *rit.* *ff* *p*

Φ Coda

127

Lento, alla recitativa

125 126 127-135 9

136

Largo

137 138 139 140

pp

141

147

142 143 144 145 146 147 148 149 150

p *dim. e molto rit. pp a tempo*

Themes from "Scheherazade"

E♭ ALTO SAXOPHONE

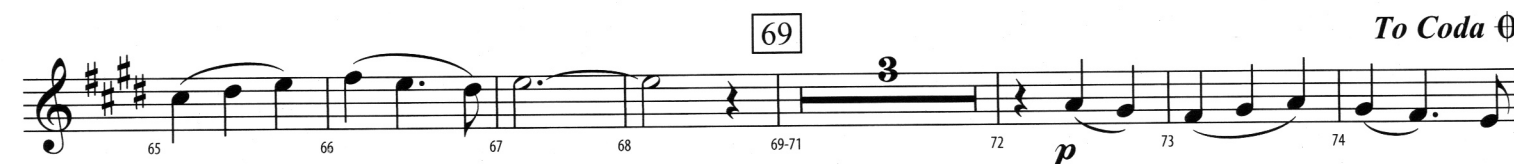
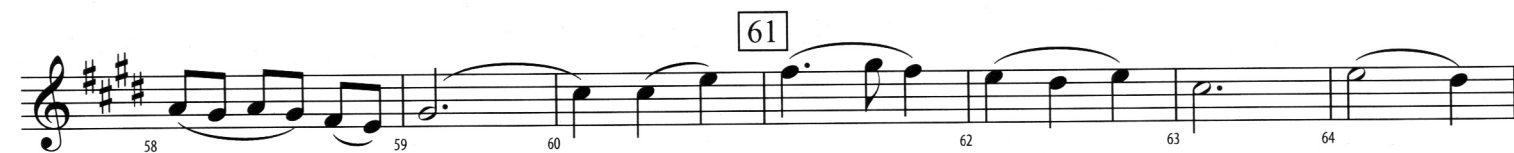
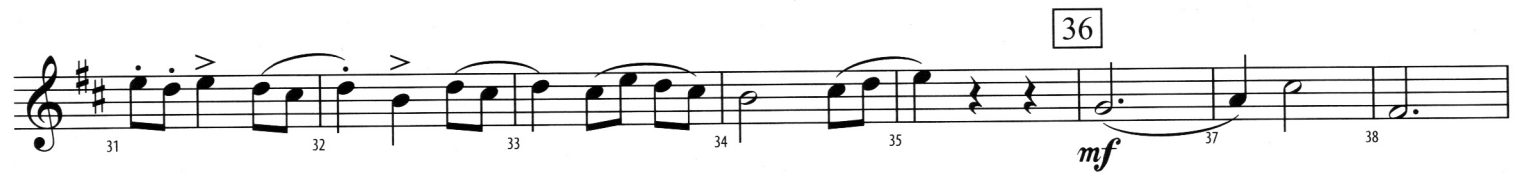
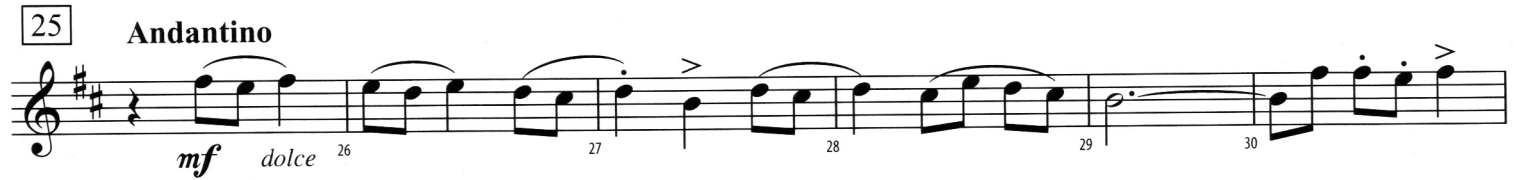
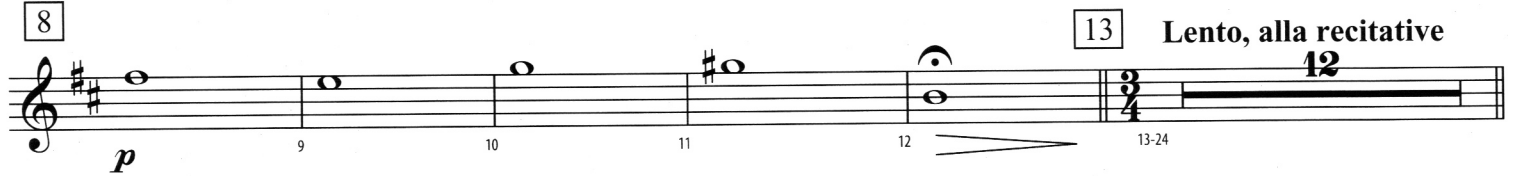
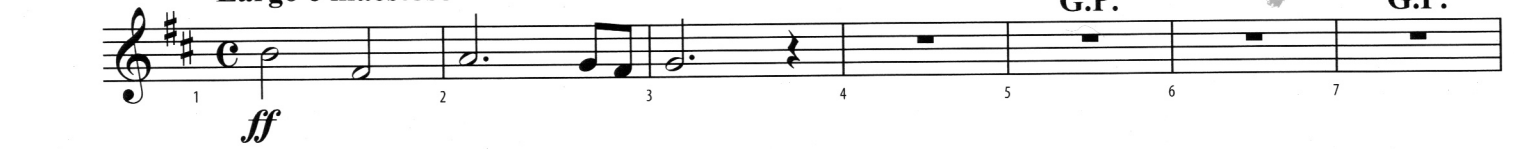
Nikolai Rimsky-Korsakov (1844-1908)

Arranged by Richard Meyer (ASCAP)

Largo e maestoso

G.P.

G.P.



E♭ ALTO SAXOPHONE - 2

77

75 76 77-79 80 81 82 83 84

p *mf* *accel.*

3

85

Poco più mosso e grazioso

86 87 88 89 90

p *sim.*

93

91 92 94 95 96 97

poco cresc.

101

98 99 100 102 103 104

f *sim.*

109

105 106 107 108 110

mp

111 112 113 114 115 116

117

118 119 120 121 122 123 124

p *ff* *p* *rit.* *ff* *p*

D.S. % al Coda

127

125 126 127-135

Coda *Lento, alla recitativa*

9

136

Largo

137 138 139 140 141 142

pp *p*

147

143 144 145 146 148 149 150

dim. e molto rit. pp a tempo

Themes from "Scheherazade"

VIOLIN I

Nikolai Rimsky-Korsakov (1844-1908)
Arranged by Richard Meyer (ASCAP)

Largo e maestoso

1 *ff* 2 3 4 5 6 7 8-11 12

V V G.P. G.P. 8 4

Lento, alla recitativa

13 Solo *f espr.* 14 3 3 15 3 3 16 3 3 17 3 3 18 3 3

25 Andantino

19 20 3 21 3 22 23 24 25 26 All (pizz.) *mf* (others)

36

27 28 29 30 31 32 33 34 35 arco *mf* < *f*

44

37 38 39 40 41 42 43 44 *sf* *f*

Allegretto

45 3 46 3 47 3 48 *mf* 49 *mp* 50 *dim.* 51 52 *p*

53 %

54 4 55 56 57 58 59 60

61

62 63 64 65 66 67 68 69-72 73 *pp* 74 To Coda ⊕

VIOLIN I - 2

75 76 77 78 79 80 81 82 83 84

p *mf* *accel.*

V 4 V V

85 Poco più mosso e grazioso

pizz. *p* 86 87 88 89 90 91 92

93 *poco cresc.* 94 95 96 97 98 99 100 *f*

arco

101 102 103 104 105 106 107 108

V

109 *div.* *p* 110 111 112 113 114 115 116

117 *p* 118 119 120 121 122 123 124 *p*

ff *rit.* *ff*

D.S. % al Coda

Coda 125 126 127 *f espr.* 128 129 130 131

Lento, alla recitativa

Solo

132 133 134 135 136 *pp* 137 138 139 140

Largo

others

141 142 143 144 145 146 147 148 149 150

mp *molto rit.*

Solo

147 *others pizz.* *p* *a tempo* 148 149 150 *pp*

Solo

others (pizz.)

Themes from "Scheherazade"

VIOLIN II

Nikolai Rimsky-Korsakov (1844-1908)

Arranged by Richard Meyer (ASCAP)

Largo e maestoso

8

G.P. G.P.

ff

1 2 3 4 5 6 7 8-11 12

13 Lento, alla recitative

pizz.

f

14 15-16 17 18-19 20 21-24

25 Andantino

mf

26 27 28 29 30 31 32 33

36

f

34 35 37 38 39 40 41

arco

44

sf sf sf rit. mf

42 43 45 46 47 48

49 Allegretto

mp dim. p

50 51 52 54

4

55 56 57 58 59 60

61

4 3

pp

62 63 64 65 66 67 68

VIOLIN II - 2

69



77



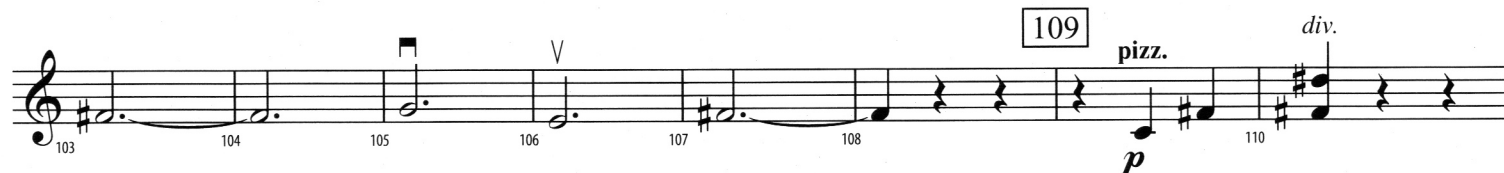
85 **Poco più mosso e grazioso**



93



109



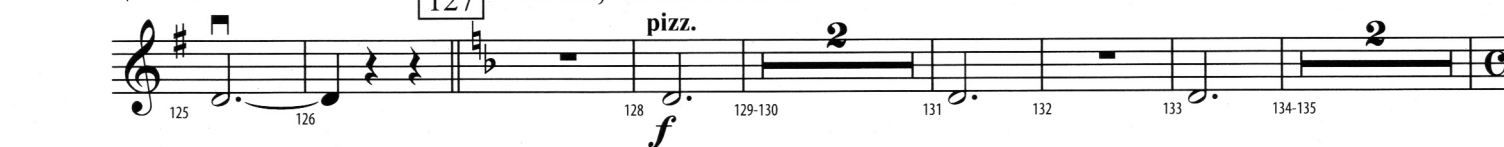
117



\oplus *Coda*

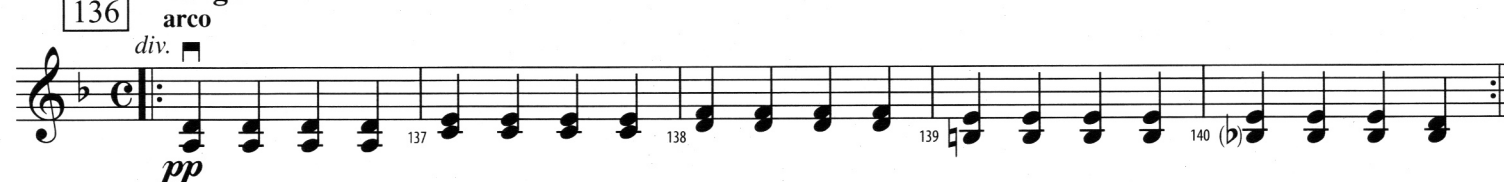
127

Lento, alla recitative



136

Largo



141

147



Themes from "Scheherazade"

VIOLA

Nikolai Rimsky-Korsakov (1844-1908)

Arranged by Richard Meyer (ASCAP)

Largo e maestoso

Measures 1-7. Measure 1: **ff**. Measure 6: **G.P.**, **mf**. Measure 7: **G.P.**. Dynamics: **ff**, **mf**. Performance markings: **V** (Violin), **G.P.** (Grave Performance).

Lento, alla recitative
pizz.

Measures 8-24. Measure 8: **4**. Measure 12: **13**. Measure 14: **f**. Measure 15-16: **2**. Measure 17: **2**. Measure 18-19: **4**. Measure 20: **4**. Measure 21-24: **4**. Dynamics: **f**. Performance markings: **4** (four-measure rest), **2** (two-measure rest).

25 Andantino

Measures 25-35. Measure 25: **mf**. Measure 26: **mf**. Measure 27: **mf**. Measure 28: **mf**. Measure 29: **mf**. Measure 30: **mf**. Measure 31: **mf**. Measure 32: **mf**. Measure 33: **mf**. Measure 34: **mf**. Measure 35: **mf**. Dynamics: **mf**.

36

Measures 36-41. Measure 36: **f**. Measure 37: **f**. Measure 38: **f**. Measure 39: **f**. Measure 40: **f**. Measure 41: **f**. Dynamics: **f**.

arco

44

Measures 42-48. Measure 42: **sf**. Measure 43: **sf**. Measure 44: **sf**. Measure 45: **sf**. Measure 46: **sf**. Measure 47: **rit.**. Measure 48: **mf**. Dynamics: **sf**, **mf**. Performance markings: **arco** (arco), **V** (Violin).

49 Allegretto

Measures 49-56. Measure 49: **mp**. Measure 50: **dim.**. Measure 51: **mp**. Measure 52: **mp**. Measure 53: **pp**. Measure 54: **pp**. Measure 55: **pp**. Measure 56: **pp**. Dynamics: **mp**, **dim.**, **pp**. Performance markings: **53** (five-measure rest), **V** (Violin).

61

Measures 57-66. Measure 57: **61**. Measure 58: **61**. Measure 59: **61**. Measure 60: **61**. Measure 61: **61**. Measure 62: **61**. Measure 63: **61**. Measure 64: **61**. Measure 65: **61**. Measure 66: **61**. Dynamics: **61** (sixty-one-measure rest).

69

Measures 67-74. Measure 67: **69**. Measure 68: **69**. Measure 69: **69**. Measure 70: **69**. Measure 71: **69**. Measure 72: **69**. Measure 73: **69**. Measure 74: **69**. Dynamics: **pp**, **p**. Performance markings: **V** (Violin), **To Coda** (Coda symbol).

VIOLA - 2

75 76 77 78 79 80 81 82

pizz.
mf *accel.*

Poco più mosso e grazioso
arco

83 84 85 86 87 88

p *spiccato* *sim.*

89 90 91 92 93 94

poco cresc.

95 96 97 98 99 100

sim.

101 102 103 104 105 106 107 108 109 110

f **pizz.**
p

111 112 113 114 115 116

117 118 119 120 121 122 123 124

arco
p **ff** **p** **ff**

rit.

D.S. al Coda

Coda
Lento, alla recitative
pizz.

125 126 127 128 129-130 131 132 133 134-135

f

Largo
arco

136 137 138 139 140

pp

141 142-144 145 146 147 148 149 150

pizz.
mf *molto rit.* **p** *a tempo* **pp**

Themes from “Scheherazade”

CELLO

Nikolai Rimsky-Korsakov (1844-1908)

Arranged by Richard Meyer (ASCAP)

Largo e maestoso

1 *ff* 2 3 4 *mf* 5 6 7

8-11 12 13 14 *f* 15-16 17

Lento, alla recitativa

18-19 20 21-24 25 *mf* 26 27 28

Andantino

29 30 31 32 33 34 35

36 37 38 39 40 41

42 43 44 45 46 47 48

49 50 51 52 53 54 55 56

57 58 59 60 61 62 63 64

65 66 67 68 69 70 71 72

CELLO - 2

To Coda Θ

73 74 75 76 77 78

p

pizz.

79 80 81 82 83 84

mf accel.

85 *Poco più mosso e grazioso*

p

86 87 88 89 90 91 92

93

poco cresc.

94 95 96 97 98 99 100

101

arco

f

102 103 104 105 106 107 108

109

pizz.

p

110 111 112 113 114 115 116

117

arco

p

ff

p

rit.

ff

118 119 120 121 122 123 124

D.S. al Coda

Θ *Coda*

127 *Lento, alla recitative*

pizz.

f

125 126 127 128 129-130 131 132 133 134-135

136 *Largo*

arco

pp

137 138 139 140 141 142-144

147

pizz.

mf

molto rit.

p

a tempo

pp

145 146 147 148 149 150

Themes from "Scheherazade"

STRING BASS

Nikolai Rimsky-Korsakov (1844-1908)

Arranged by Richard Meyer (ASCAP)

Largo e maestoso 1/2 pos. 4 I pos. 4 1/2 pos. 1

ff **mf** **G.P.** **G.P.**

8 **13** **Lento, alla recitative** pizz. **4** **2** **2** **4**

8-11 12 14 **f** 15-16 17 18-19 20 21-24

25 **Andantino**

mf 26 27 28 29 30 31 32 33

36 1/2 pos. 4 1

34 35 **f** 37 38 39 40 41 42

arco **44** **sf** **sf** **sf rit.** **mf** **V**

43 45 46 47 48

49 **Allegretto** **53** **mp** **dim.** **pp**

50 51 52 54 55 56

61 **V**

57 58 59 60 62 63 64 65 66

69 **V** **To Coda** **pp**

67 68 70 71 72 73 74 75 76

STRING BASS - 2

77

p 78 79 80 81 *mf* 82 *accel.* 83 84

pizz.

85 **Poco più mosso e grazioso**

p 86 87 88 89 90 91 92

93

poco cresc. 94 95 96 97 98 99 100

101

f 102 103 104 105 106 107 108

109

p 110 111 112 113 114 115 116

117 $\frac{1}{2}$ pos.
arco 4

p 118 119 120 121 122 *rit.* 123 124

ff *ff*

D.S. al Coda

Coda

127 **Lento, alla recitative**

pizz. 128 *f* 129-130 131 132 133 134-135

136 **Largo**
arco

$\frac{1}{2}$ pos. 137 138 139 140

pp

141

147

pizz. 142-144 145 *mf* 146 *molto rit.* 147 *p* 148 *a tempo* 149 *pp* 150

Themes from "Scheherazade"

PIANO ACCOMPANIMENT

Nikolai Rimsky-Korsakov (1844-1908)

Arranged by Richard Meyer (ASCAP)

Largo e maestoso

G.P.

First system of the piano accompaniment for measures 1 through 6. The music is in 2/4 time, key of B-flat major. Measure 1 starts with a fortissimo (ff) dynamic. Measures 2-5 contain various chords and single notes. Measure 6 begins with a mezzo-forte (mf) dynamic. Fingerings 1 through 6 are indicated below the bass staff.

G.P.

8

Second system of the piano accompaniment for measures 7 through 12. Measures 7-11 consist of sustained chords. Measure 12 ends with a double bar line. Dynamics include piano (p) in measure 8. The key signature changes to E-flat major in measure 12, and the time signature changes to 3/4. Measure numbers 7, 9, 10, 11, and 12 are marked below the staff.

13

Lento, alla recitative

Third system of the piano accompaniment for measures 13 through 24. The music is in 3/4 time, key of E-flat major. Measures 13-14 start with a fortissimo (f) dynamic. Measures 15-16, 17-18, and 19-20 feature long horizontal lines indicating sustained notes or chords, with a '2' above them. Measures 21-24 feature a '4' above the line, indicating a four-measure rest. Measure numbers 13, 14, 15-16, 17, 18-19, 20, and 21-24 are marked below the staff.

25

Andantino

Fourth system of the piano accompaniment for measures 25 through 30. The music is in 3/4 time, key of E-flat major. Measures 25-30 feature a melody in the right hand with a mezzo-forte (mf) dynamic and a 'dolce' marking. The left hand provides harmonic support with chords. Measure numbers 26, 27, 28, 29, and 30 are marked below the staff.

36

Fifth system of the piano accompaniment for measures 31 through 36. Measures 31-35 continue the melody from the previous system. Measure 36 features a fortissimo (f) dynamic. Measure numbers 31, 32, 33, 34, 35, and 36 are marked below the staff.

PIANO ACCOMPANIMENT - 2

37 38 39 40 41 42

43 45 46 47 48

sf *sf* *sf rit.* *mf*

49 50 51 52 54 55 56

Allegretto *mp* *dim.* *p*

57 58 59 60 62

63 64 65 66 67 68

p

69 71 72 73 74 75 76

To Coda *p*

PIANO ACCOMPANIMENT - 3

77

78 79 80 81 82 83 84

mf *accel.*

85 Poco più mosso e grazioso

86 87 88 89 90

sim.

93

91 92 94 95 96 97

poco cresc.

101

98 99 100 102 103 104

f

109

105 106 107 108 110 111

mp

117

112 113 114 115 116 118

p

PIANO ACCOMPANIMENT - 4

D.S. % al Coda

119 120 121 122 123 124

Coda 127 **Lento, alla recitative**

125 126 128 129-130 131 132

136 **Largo**

133 134-135 137 138

141

139 140 142 143 144

147

145 146 147 148 149 150