

CONCERTI DELLE STAGIONI

I. LA PRIMAVERA

ANTONIO VIVALDI

(1675? - 1740?)

op. 8

ORGANO

A (1)

ALLEGRO

con festosità

p

f

B

p

allarg.

a tempo

1) Non sono indicati nè il pedale nè la registrazione dell'Organo, perchè si lascia all'intelligenza dell'esecutore la facoltà di impiegarli a seconda del complesso di strumenti cui si accompagna.

13

allarg.

This system contains measures 13 through 16. The key signature is three sharps (F#, C#, G#). The music is written for a single melodic line on a grand staff. Measure 13 begins with a fermata. The tempo marking *allarg.* (allargando) appears at the end of the system.

C

p a tempo

This system contains measures 17 through 20, marked with a section letter **C** in a box. The tempo marking *p a tempo* (piano, at tempo) is present. The music features sustained chords in the right hand and moving lines in the left hand.

This system contains measures 21 through 24. The musical notation continues with various chordal textures and melodic fragments.

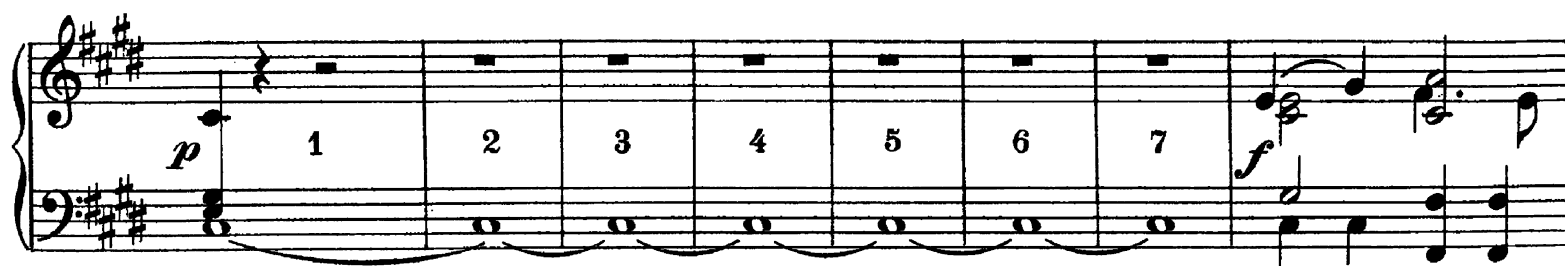
D

p

This system contains measures 25 through 28, marked with a section letter **D** in a box. A piano (*p*) dynamic marking is present. The music includes some rests and sustained notes.

This system contains measures 29 through 32. The notation shows a continuation of the organ piece with various musical textures.

This system contains measures 33 through 36. The piece concludes with sustained chords and melodic lines.

E**F IL CAPRARO CHE DORME**
LARGO